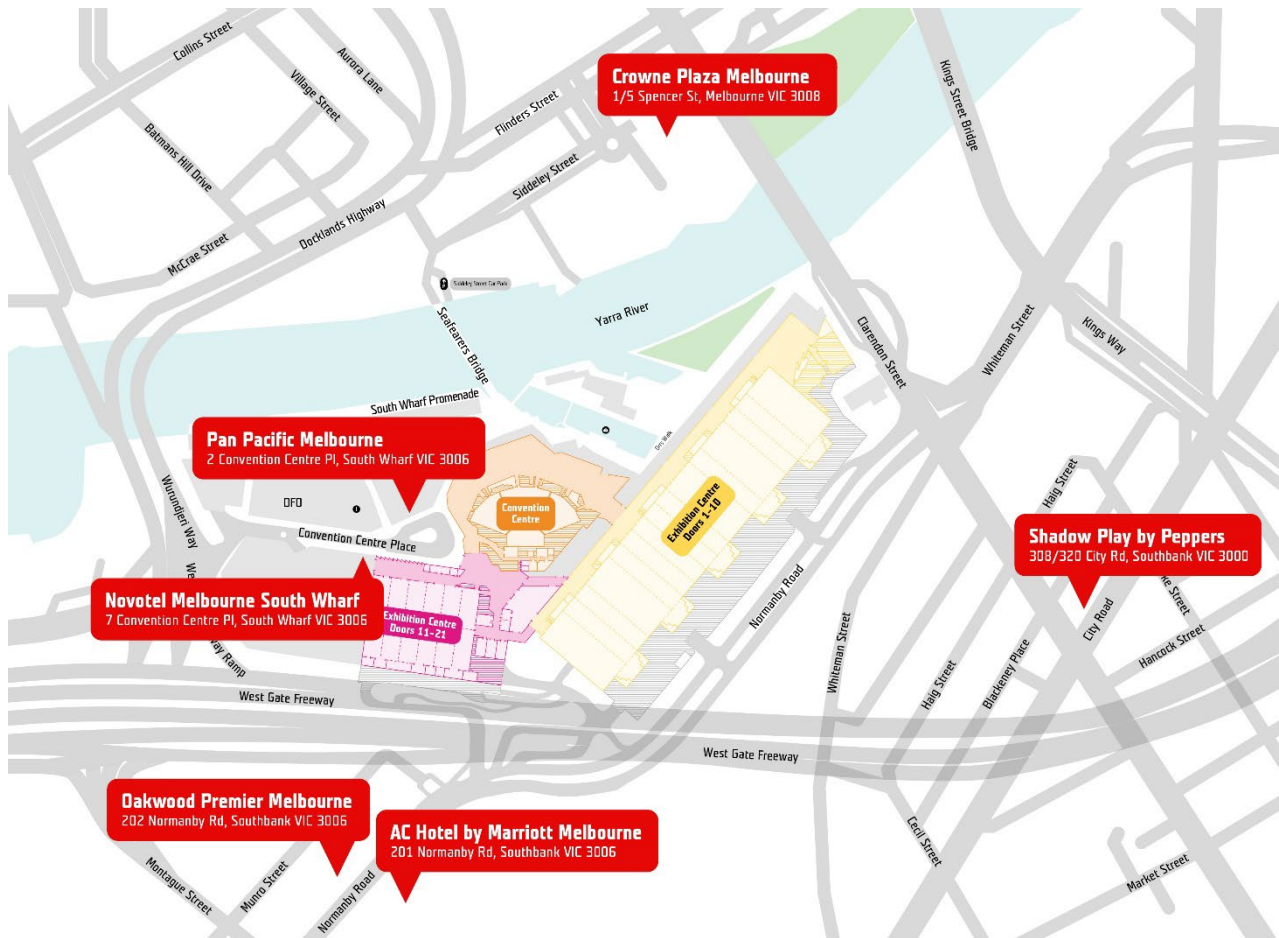


Accommodation

Plan an unforgettable stay in Melbourne, just steps away from MCEC.



We are centrally located within the South Wharf precinct offering an incredible array of accommodation, dining, and shopping experiences.

With both onsite and nearby accommodation, our customers have a range of choices to explore.

We've partnered with some of our local hotels to give you the best accommodation options and rates during your event, all within a short distance. Enjoy discounted rates for group stays on over 10,000 rooms by booking through our unique links.

Nothing beats the comfort of having a variety of excellent hotel options right at your fingertips while planning your next event.



Exclusive offers:

Crowne Plaza Melbourne

2 min walk



Crowne Plaza Melbourne is conveniently located by the Yarra River, providing easy access to explore Melbourne and beyond. It's within the free tram zone and a short walk from Southern Cross Station. Conveniently explore MCEC and its surroundings, including Marvel Stadium and South Wharf Direct Factory Outlets. Recently refurbished, the hotel delivers stylishly furnished rooms with free minibar snacks and beverages, a pod coffee machine, and a 55-inch smart TV with casting capabilities.

Amenities include:

- Brand new restaurants and bars
- Private function spaces
- Outdoor heated pool
- 24-hour fitness centre
- All-day in-room dining

MCEC Exclusive Offers

- 10% off the best available rate

Booking Process

For Individual Bookings: <https://www.melbourne.crowneplaza.com/mcecguests/>

For Group Bookings (more than 10+ rooms): <https://www.melbourne.crowneplaza.com/group-booking-query/>



Shadow Play by Peppers

7 min walk



Experience the contemporary luxury of Shadow Play by Peppers Hotel in Melbourne. Located just a short walk from MCEC, this boutique serviced apartment accommodation offers stylish one and two-bedroom apartments. Enjoy separate living and workspaces, fully equipped kitchens, and private laundry facilities.

Amenities include:

- Outdoor heated pool
- Gymnasium
- Sauna & Steam room
- Edwin Wine Bar with an extensive Victorian wine list
- Breakfast, lunch, and dinner are available 7 days a week
- Bespoke private dining spaces on level 46 with panoramic views of Melbourne and beyond.

MCEC Exclusive Offers

- 10% off the best available rate
- Includes room-only and room and breakfast packages

Booking Process

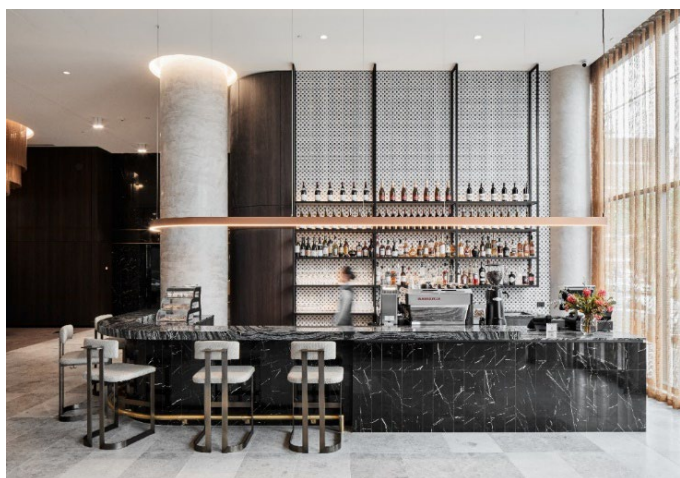
For both Individual and Group Bookings:

Click here and follow the prompts: <http://www.hotelshadowplay.com.au/mcec>



Oakwood Premier Melbourne

12 min walk



Oakwood Premier Melbourne offers the best of both worlds with hotel conveniences and serviced apartments. The 40-storey tower features 132 luxurious hotel rooms and 260 serviced apartments with modern in-room technology. Enjoy the stunning city views, Port Philip Bay, and Melbourne's surroundings. For corporate travellers, there's a co-working space and flexible boardrooms. Indulge in breakfast at Fifth, relax at the stylish Lobby Bar, or savour a contemporary dining experience with panoramic views at Strato Melbourne on Level 40.

Amenities include:

- Fitness Centre
- Games Room
- Residents' Lounge
- Outdoor areas with scenic views
- Co-working space
- Four flexible boardrooms
- Ballroom for meetings and events
- In-house breakfast restaurant, Fifth
- Stylish Lobby Bar
- Strato Melbourne on Level 40 with panoramic views.

MCEC Exclusive Offers

- 10% off the best available rate

Booking Process

For Individual Bookings:

1. Visit Oakwood Premier Melbourne's website
<https://www.discoverasr.com/en/oakwood/australia/oakwood-premier-melbourne>
2. Click on Search field and enter the following your selected dates and number of rooms.
3. Click on 'Please select a code', select 'Corporate' and enter the following code:
P5MEL686
4. Continue on with your booking and you will receive an instant confirmation and can manage changes within the Oakwood Premier Melbourne website.

For Group Bookings of 9+ rooms, please follow the below instructions:

1. Complete the enquiry form at <https://www.ivvy.com.au/VM-81820-1550-7975136/order/start?v=0f62c83de5dcf89a77be48025493b331&type=enquire>
2. Include the promo code: **MCEC** and event dates in the comments section.
3. Use promo code "MCEC" to receive a discounted rate.



Additional Hotel Options

AC Hotel by Marriott Melbourne

Experience a unique connection with Melbourne at AC Hotel Melbourne Southbank. This design-focused and pet-friendly hotel considers every aspect of your stay in Melbourne. Stay active at the modern AC Fitness Centre. Enjoy the infinity pool while indulging in expertly crafted cocktails from Bar de Buceo. Start your mornings with a fresh European breakfast and finish your day with a signature gin and tonic at the stylish rooftop.

For further details and to make a booking, please refer to the following link:
AC Hotel by Marriott Melbourne Southbank | MCEC

Pan Pacific Hotel South Wharf

Connected directly to MCEC via level 1.

Please contact the Pan Pacific directly to obtain hotel details and rate information:

2 Convention Centre Place South Wharf, Melbourne Victoria 3006 Australia

Telephone+61 3 9027 2000

Toll-Free1800 01 7747

Email: enquiry.ppmel@panpacific.com

Novotel South Wharf

Connected directly to MCEC via Melbourne Exhibition Centre.

Please contact the Novotel South Wharf directly to obtain hotel details and rate information:

7 Convention Centre Place, South Wharf, Melbourne Victoria 3006 Australia

Telephone +61 3 9058 0444

Email: emailhB064@accor.com

